

Sina HYPE 8 G3



Audio Service

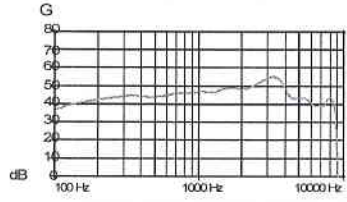
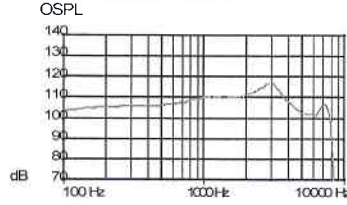
MAXIMUM ÇIKIŞ

Input: 90 dB

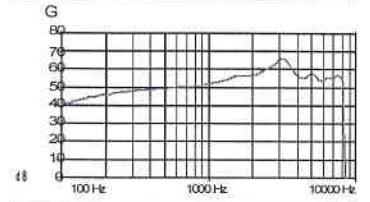
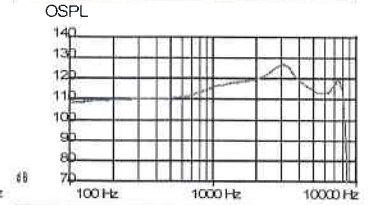
MAXIMUM KAZANÇ

Input: 50 dB

IEC 60118-7:2005¹⁾
ANSI S3.22-2009¹⁾



IEC 60118-0²⁾



TEKNİK BİLGİLER

MAXIMUM ÇIKIŞ

Peak value at 90 dB	118 dB	127 dB
1,600 Hz (RTF)	110 dB	118 dB
HFA (High Frequency Average)	112 dB	115 dB

TAM KAZANÇ

Peak value at 50 dB	55 dB	66 dB
1,600 Hz (RTF)	48 dB	56 dB
HFA (High Frequency Average)	48 dB	52 dB
Reference test gain	35 dB	49 dB

TEKNİK ÖZELLİKLER

Battery type	10	10
Battery life in hours	79	79
Frequency range	100 – 8,500 Hz	100 – 8,250 Hz
Battery current consumption	0.80 mA	0.80 mA
Equivalent noise level	19 dB	22 dB
Distortion		
500 Hz	1%	2%
800 Hz	1%	2%
1,600 Hz	1%	1%

¹⁾Technical data measured in accordance with IEC 60118-7:2005 and ANSI S3.22-2009 at 2-ear coupler
²⁾Technical data measured in accordance with IEC 60118-0 at ear simulator

Connex 7.5 and AudioFit 7.5 yada daha üstü program ile programlanır.

Tercüme edilmek üzere bana verilen ... İngilizce
dilindeki Asıl/Fotokopi/aks belgeleri
Türkçe... diline tam ve doğru olarak
çevirdiğim beyan ederim.

Noter Yeminli Mütercim
TÜLAY YAVUZ

